



مدرسة البحث العلمي  
School of Research Science

# Science Revision 2022

## Year 6

# ADAPTATION



How has a polar bear adapted to suit its cold environment? Choose 2 options

- A** Thick fur
- B** Four legs
- C** Ability to swim
- D** Ability to store fat



Which of these is not a feature of all mammals?

- A** Eats leaves
- B** Hair or fur
- C** Backbone
- D** Warm Blooded

# FOSSILS



Why are fossils useful to scientists?

- A** They're worth a lot of money
- B** They show us animals
- C** They help us discover about the past
- D** They help us build new animals



Which type of rock is MOST likely to contain a fossil?

- A** Igneous
- B** Metamorphic
- C** Sedimentary
- D** Diamond

# FORCES



المدرسة البحثية  
School of Research Science

What is this object?

- A** A ruler
- B** A switch
- C** A magnet
- D** A light source



Mary rubs her hands together and they feel warm - which force causes this?

- A** Gravity
- B** Upthrust
- C** Friction
- D** Air resistance

# FORCES



المدرسة البحثية  
School of Research Science

Michael walks on a wooden floor - which force prevents him from slipping over?

- A** Gravity
- B** Friction
- C** Upthrust
- D** Air resistance



A parachute falls from the sky - which force helps to slow down the rider?

- A** Gravity
- B** Buoyancy
- C** Friction
- D** Air resistance



# FORCES



الجامعة الأردنية  
School of Research Science

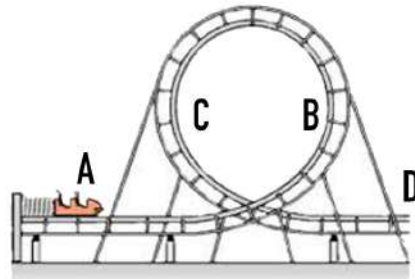
Where on this roller coaster does gravity slow down the car?

**A** A

**B** B

**C** C

**D** D



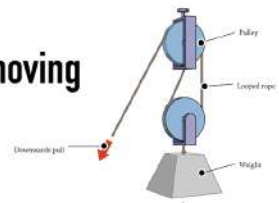
What is the purpose of a pulley or a lever?

**A** To help gravity

**B** To stop objects moving

**C** To allow a small force to have a greater effect

**D** To help friction



# LIFE CYCLES



الجامعة الأردنية  
School of Research Science

Which of these is part of the butterfly's life cycle but not the frogs?

**A** Eggs

**B** Pupae/Cocoon/Chrysalis

**C** Adult

**D** Tadpole

Tom's older brother is going through puberty/adolescence - which of these is most likely?

**A** His older brother is shorter than him

**B** His older brother has a higher voice

**C** His older brother has a deeper voice

**D** He hasn't changed at all

# PLANTS



If the Earth becomes hotter and drier, what would plants need to develop?

- A** To be less reliant on water
- B** Longer stems
- C** Bigger petals
- D** Bigger leaves



An animal eats a seed - which is then deposited in its waste - how does this help the plant?

- A** The seed grows inside the animal
- B** The seed gives the animal energy
- C** The seed is spread to a new area
- D** The seed isn't helped at all

# PLANTS



How do longer roots help plants?

- A** To take in sunlight
- B** To help them find water
- C** To help with photosynthesis
- D** To locate other plants

Sarah wants to measure how different types of soil affect plant growth. She plants the same seed in two different soils and watches for a week. What should she measure?

- A** The amount of soil
- B** The height of the plants
- C** The amount of flowers
- D** The weight of the soil

# PLANTS

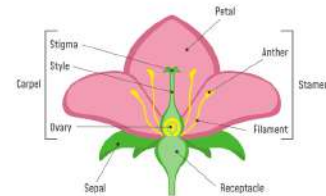


الجمهورية العربية السعودية  
Ministry of Education  
School of Research Science

What is the purpose of the leaves on a plant?

- A** To take in water
- B** To help them find water
- C** To help with photosynthesis
- D** To locate other plants

What is the purpose of the roots? - tick TWO answers



- A** To take in water and nutrients
- B** To locate other plants
- C** To anchor the plant and keep it steady
- D** To collect sunlight

# WATER CYCLE



الجمهورية العربية السعودية  
Ministry of Education  
School of Research Science

Which of these is not a stage of the water cycle?

- A** Condensation
- B** Transplantation
- C** Evaporation
- D** Precipitation

Which stage of the water cycle is when water rises from the sea and becomes a gas?

- A** Ground water flow
- B** Condensation
- C** Evaporation
- D** Precipitation



# STATES OF MATTER



The temperature of some water goes from 89 degrees to 110 degrees - what has happened to the water?

**A** It has condensed

**B** It has frozen

**C** It has boiled

**D** It has melted



Which of these is an example of water changing from a liquid into water vapour?

**A** Clothes drying on a rack

**B** A lake freezing in winter

**C** Moisture forming on glass when you breathe on it

**D** Sweat forming when you run

# STATES OF MATTER



Sally burns some bread in her toaster - why can't she change it back to regular bread?

**A** Bread can't be changed

**B** An irreversible change has happened

**C** A reversible change has occurred

**D** It can be changed

Which of these are irreversible changes?

**A** Cooking and Burning

**B** Evaporating

**C** Melting

**D** Freezing



# THE HUMAN BODY



المدرسة  
البحرية  
العلمية  
مدرسة  
البحرية  
العلمية  
School of Research Science

Sam can run 100m in 15 seconds. After running every day for 2 months, which of these is his most likely new running time for 100 metres?

**A** 16 seconds

**B** 13 seconds

**C** 4 seconds

**D** 18 seconds



How are nutrients carried through the human body?

**A** Through the skeletal system

**B** Through the muscular system

**C** Through blood

**D** Through water

# SPACE



المدرسة  
البحرية  
العلمية  
مدرسة  
البحرية  
العلمية  
School of Research Science

Which of the following statements is true?

**A** The sun orbits the Earth

**B** The Earth orbits the Sun

**C** The Earth orbits the Moon

**D** Mars orbits the Earth

How many days are there in an average moon's orbit of the earth?

**A** 7 Days

**B** 10 Days

**C** 27 Days

**D** 365 Days



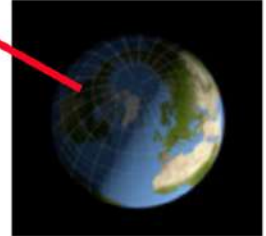


# SPACE



Tyler lives on this side of the Earth - what is currently happening?

- A** It is winter
- B** It is night time
- C** It is the end of the Moon's orbit
- D** It is day time



Sarah watches the sun disappear over the horizon - why does this happen?

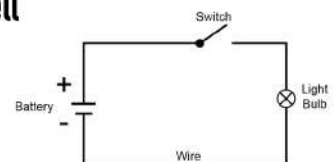
- A** Because it is day time
- B** Because the Earth is rotating
- C** Because the sun orbits the Earth
- D** Because the Moon is orbiting the Sun

# ELECTRICITY

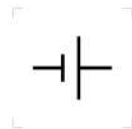


Martin wants to increase the strength of the bulb in his circuit - what can he do?

- A** Add another bulb
- B** Add another cell
- C** Add a switch
- D** Add more wire



Can you match the diagrams to their labels?



- A** Bulb
- B** Motor
- C** Battery
- D** Buzzer

# CLASSIFICATION



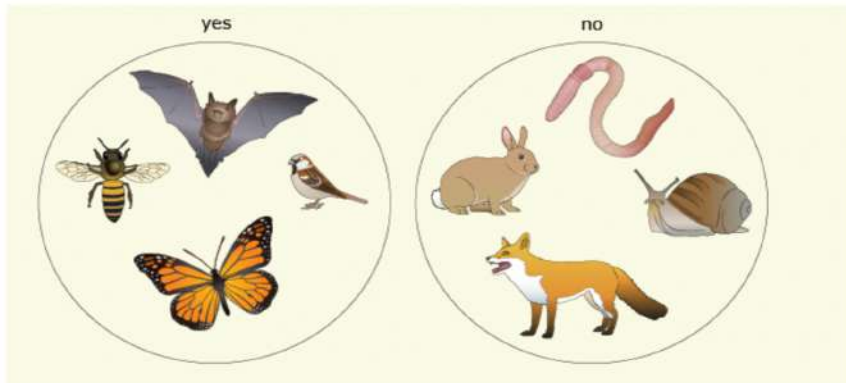
Which question has been asked to separate these animals?

**A** Is it a mammal?

**B** Is it an insect?

**C** Does it have wings?

**D** Does it have sharp teeth?



# MATERIALS



Which type of material for a bowl would heat up quickest?

**A** Wood

**B** Metal

**C** Plastic

**D** Rubber



Which of these materials would be transparent?

**A** Wood

**B** Glass

**C** Plastic

**D** Metal

# SOLUTIONS AND FILTERING



Which mixture would form a solution?

- A** Sand and water
- B** Sugar and water
- C** Dirt and sand
- D** Salt and Sugar

How would you separate chocolate chips and flour?

- A** Filtering
- B** Evaporation
- C** Sieveing
- D** Boiling

# SOLUTIONS AND FILTERING



How would you separate sand and water?

- A** Filtering
- B** Evaporation
- C** Sieveing
- D** Boiling

How would you separate salt and water?

- A** Filtering
- B** Evaporation
- C** Sieveing
- D** Boiling



# LIGHT



Which of these is a light source?

- A** Mirror
- B** A window
- C** The Moon
- D** A fire



Why would a shadow have the same shape as the object?

- A** Because it is far away from the light
- B** Because light travels in straight lines
- C** Because light bends around objects
- D** Because light cannot pass through the object

# LIGHT



Why can we see objects at night using a torch?

- A** Light bends around objects
- B** The light reflects back off objects into our eyes
- C** The light travels in straight lines
- D** The objects emit light

Why do shadows form?



- A** Because light goes through the object
- B** Because light travels in straight lines
- C** Because light bends around objects
- D** Because light cannot pass through an object

# EXPERIMENTS



David wants to measure how plants grow in different soils. Which variable in the experiment will he change?

- A** The type of plant
- B** The location of the plants
- C** The amount of water
- D** The type of soil used

David gets his results, and wants to ensure they are correct – what should he do?

- A** Check again with new plants
- B** Nothing
- C** Repeat the experiment
- D** Check again with different soil



# READING TABLES AND GRAPHS



	Oreo cookie pack	Protein bar	Oat bar	Milky Way bar
Calories	215	300	180	232
Total Fat	5.5g	7.8g	3.4g	4.6g
Salt (mg)	850	990	810	880

Which food would be best for someone on a low-fat diet?

- A** Oreo cookie pack
- B** Protein bar
- C** Oat Bar
- D** Milky Way Bar





# READING TABLES AND GRAPHS



	Melting point	Boiling point
<b>Silver</b>	1045	2067
<b>Water</b>	0	100
<b>Copper</b>	1032	4500
<b>Carbon</b>	3465	5000

Which material has the highest difference between its boiling point and melting point?

- A** Silver
- B** Water
- C** Copper
- D** Carbon

# READING TABLES AND GRAPHS



Which graph show a steady increase over time?

- A**
- B**
- C**
- D**

Which type of graph is best to measure the growth of a plant over time?

- A** Pyramid chart
- B** Line graph
- C** Pie chart
- D** Bar chart

End of Revision  
paper